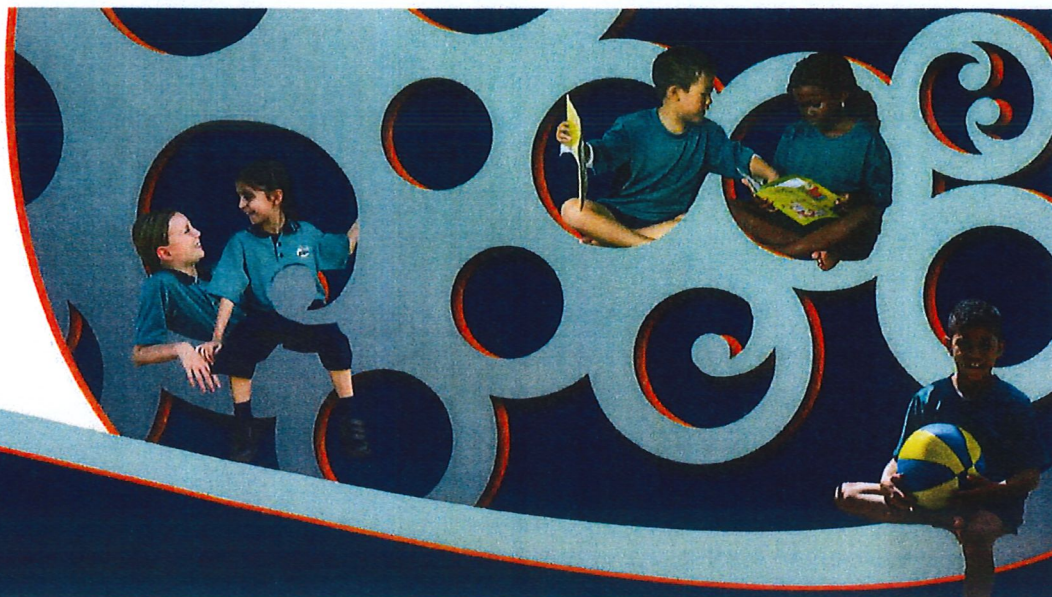


# Jireh Christian School Newsletter



## 4 March 2020 Important Dates

Whole School Picnic	<b>Friday 20 March</b>
OPEN DAY 9.30am—Midday	<b>Wednesday 1 April</b>
PA Cultural Dinner	<b>Saturday 4 April</b>
Parent / Teacher Interviews <b>SCHOOL CLOSSES 2PM</b>	<b>Monday 6 April</b>
Multi Day Manu & Wai Easter Assembly End Term One	<b>Thursday 9 April</b>



## 3-D Printing Hands-on!

Dear Parents

Thank you to those of you who attended our Parent Meeting on Monday night. For those of you who were not able to attend I will give a brief summary of what was covered. VK Sood introduced Master Mind Abacus Maths which will be a maths programme run as an extra-curricular activity at JCS one afternoon a week. VK currently runs the Young Engineers class held every Tuesday afternoon. This is a fantastic programme developing STEM, (Science Technology Engineering and Maths) skills in children. VK explained the huge benefits of Master Mind Abacus Maths to brain development and logical thinking. More information is attached with this newsletter, for those who wish to find out more about the programme and when it will be run.

The staff and Board of Trustees, (BoT) were introduced and prayed for. The Chairman of the BoT gave a few words reassuring the parents that the BoT is here to serve and to ensure that every student and staff member is supported and given every opportunity to achieve highly. Parent feedback is tremendously important to us as we work together to nurture your child to become all that God intended for them to be. From a parent survey conducted late in 2018 an update was given looking

at what had been requested and what has been accomplished over the last year. The field has been drained, a new playground put up, shade cloth over the Junior quad eating area is in place, a number of trees have been planted to provide shade in the future, and the school has been painted outside now in all areas. The painting of the inside of the buildings is in the process of being done, starting with all the toilet blocks. A number of parents requested that JCS go all the way to Year 13 and for an all-purpose centre to be built for indoor sport, musicals and an indoor gathering place for the whole school. This would be possible if we were to purchase the land next door to the school, 73 St. Georges Rd. It backs on to our field and is 1.6 acres. This would give off street parking and the possibility to erect an all-purpose building, administration block and specialised facilities for a college. This is a matter for prayer. Our proprietors are in negotiation with the owners of the land. The asking price at this time is prohibitive but we serve a big God for whom all things are possible. Some other exciting developments to come this year is the building of a Makerspace by combining the current art room and computer suite including the deck between them, both of these rooms are currently too small to fit a

*Continued overleaf*

Continued from front page

whole class but combined with the inclusion of the deck area would make a very usable space. This space would be used for creating, inventing, experimenting and innovating using technology, (digital, hard and soft materials), electronics, robotics and design. It will be available for all year levels and would allow us to develop our own technologies programme for the Year 7 and 8 students, who currently do this off-site. JCS is part of a Kahui Ako, (Community of Learning) with KingsWay School and Westminster Christian School, and the strategic initiatives for the next three years will include a focus on; teaching and learning of students for whom English is not their first language, student well-being and future focused learning dispositions which will tie in with our JCS student outcomes namely; confident, connected, contributing, constantly learning and Christ-centred.

The Parents' Association is a small, dynamic group of parents who organize community building and fund raising events. Some of these include; calendar art, Grandparents' Day, BBQs, Boogie night, Walkathon and selling reusable bags. These fund raising efforts have allowed us to buy gardening equipment for the Manu team to use for planting, iPads, sets of reading books and team sports' uniforms. They are looking for new members to help their efforts in a number of

areas. A form will be going out soon which will enable you to indicate which area you could be of assistance. Any help would be gratefully received and would benefit our students.

Yours in partnership

Sandra Bosman



### Visitors/parents during the school day

For security purposes, we do not permit parents to wander the school grounds or visit their child's classroom during the school day. If your child has left something at home (lunch box, water bottle, homework, etc.) and you are bringing it to school, please drop it off at the office. Please do NOT go to your child's class; it is disruptive for the other students and the teacher. Thank you for your co-operation and courtesy.

### Kelvinside Terrace

The Kelvinside Terrace school entrance will be re-opened to help alleviate the crush at the other two entrances. PLEASE, if you would like this option to be ongoing we need to respect the neighbours and ONLY park on Kelvinside Terrace or Arran Street. You will need to park on the roadside and walk your child onto the school grounds. Let's make this work!



### KINDO

We are introducing a new payment system which will be our preferred payment method from now on. Our current system does not show MATCHED items / payments. Statements might show you owe \$100.00 and you pay \$100.00, and your next statement will just show as a Zero Balance. It does not show the payment received.

Kindo gives more flexibility—some people don't want to pay their costs for the year in advance, some want to do it Term by Term. This way you may decide to pay X amount on one cost and Y amount on a different cost. As soon as it is paid, you will have access to the statement which shows the balance immediately. You may pay money into this account on a weekly / monthly / Term basis. The important thing is that balances are available immediately so you will know exactly where you stand. Please read the attached leaflet to find out how to register for this awesome new system.

### PRAYER



It is a privilege to pray for our children, our school and community. Join our faithful prayer warriors every Wednesday from 8.15am in the school library.

Don't feel you have to make a commitment to attend regularly, just be there whenever you can.

Your prayers are so very appreciated!

+64 00 9 836 6913  
+64 2108538662

administration@jireh.school.nz  
www.jireh.school.nz

63 St Georges Road,  
Avondale,  
Auckland 0600

From God,  
For God  
I Atua,  
Hoki Atua



'We are a Christ centred community where learners are nurtured to glorify God'

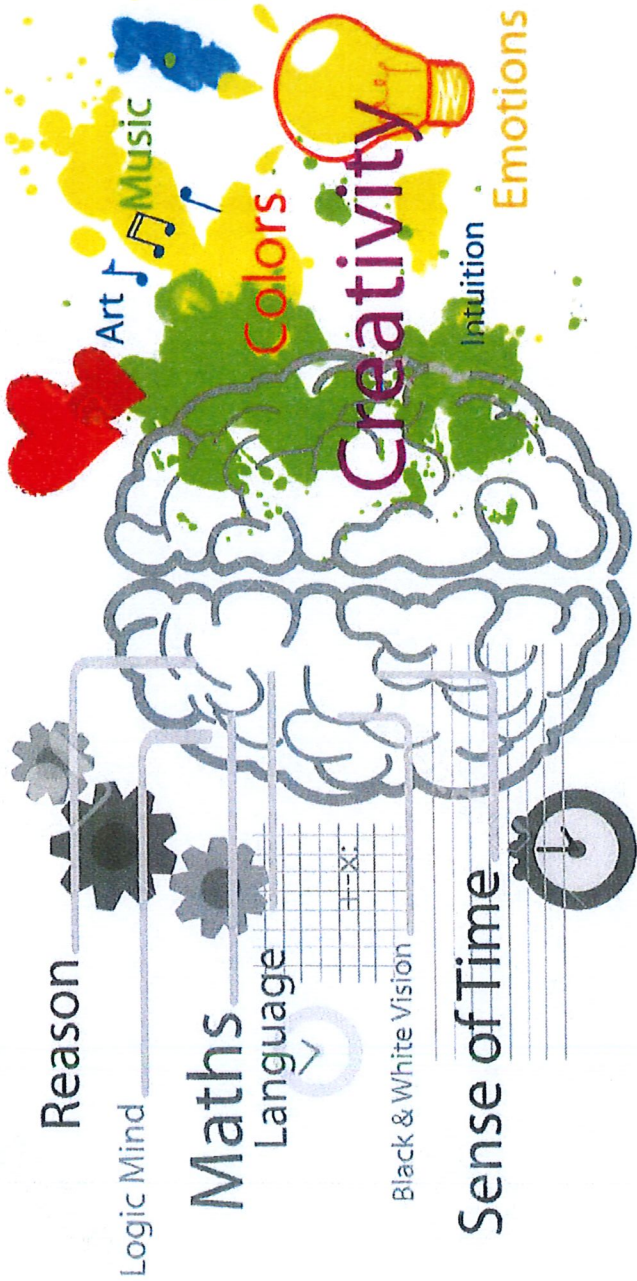
6 2 = 8 x 7 ©  
 4  
**MASTER MIND**  
**ABACUS**  
 1 + 5 3 0 ÷

**Enrollments  
 Open!!!**

**After School Program @JIREH  
 Every Wednesday 3:00 to 5:00 pm**

**Holistic Brain  
 Development Program**

**Improve Your Child's Mental Arithmetic Abilities  
 Your Child Can Beat The Calculator At "MASTER MIND ABACUS"**



**Concentration  
 Skills**

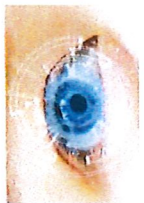


**Cost \$10/hr  
 (2 hrs/week)**

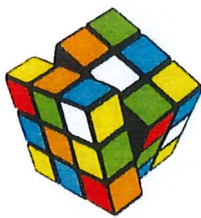
**Recall**



**Registration + Kit Cost \$150\***  
 \*One Time Conditions Apply



**Visualization**



**Logical Skills**



**Photographic  
 Memory**

[www.mastermindabacus.co.nz](http://www.mastermindabacus.co.nz)  
 E: [mastermindabacusnz@gmail.com](mailto:mastermindabacusnz@gmail.com)  
 M: 022 1955 733

## School payments online

We are excited to let you know about our Kindo online School shop! It is our preferred method of payment for your child's school expenses, and we encourage you to set up your family account today.

It's easy, convenient, open 24/7 and will soon be available on our school website.

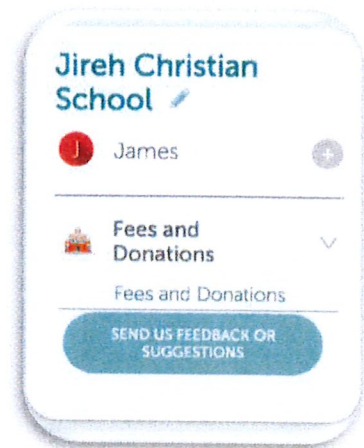
### New users

New users can set up an account easily!

Click [here](#) and enter the email address the school has on file for you, then click 'continue'.

A confirmation email with a link will be sent to you.

Click on the link and enter a password to complete your registration.



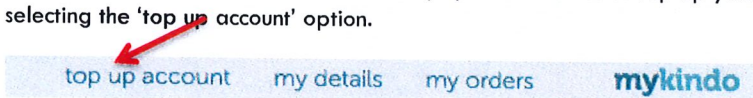
link

### Existing users

 Already have an Ezlunch or Kindo account?

Simply login with your email and password and click on the 'Fees and Donations' service to your students to our school records and view your family account. [Click here](#) to log in.

**Payment** There are a number of ways you can choose to top-up your account, and this can be done at the checkout, or by selecting the 'top up account' option.



**Internet Banking** No fees. Allow 2 days for processing.


**POli** No fees. Instant transfer. **\*\*RECOMMENDED\*\***

**Credit/Debit Card** 50 cent charge + 2.5% fee. Instant transfer.

Visa / MasterCard / American Express / China UnionPay available.


## Shopping

From your family account, you can choose to pay the full amount by clicking '+' next to the item or make a part payment, by

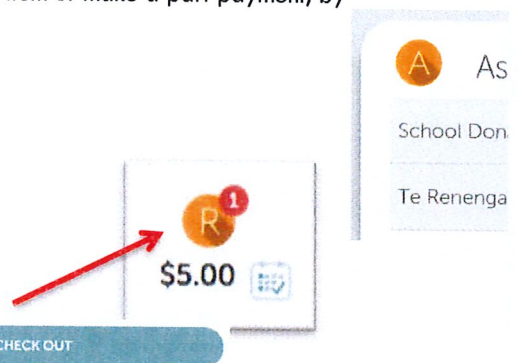
changing the amount before clicking the '+'. 

For an optional item, click on your child's initial next to the item to add it to your cart.

Once you have finished adding items to your cart you can select

Then simply click at  the checkout and you're done!

Your order will automatically go through to the school, and you will receive an email receipt confirming your payment or top-up!



**Need assistance?** Call the Kindo helpdesk on **free phone 0508 4 KINDO (0508 454 636)**.

We are open Monday to Friday 8am - 4pm.